



Standard U.S. Dress Size

Discover our [Formal and Special Occasion Dress Collection](#) and our [Wedding Dress Collection](#)

Standard Size	S				M				L				XL			
	2		4		6		8		10		12		14		16	
US Size	32		34		36		38		40		42		44		46	
Europe Size	6		8		10		12		14		16		18		20	
UK Size	inch	cm	inch	cm	inch	cm	inch	cm	inch	cm	inch	cm	inch	cm	inch	cm
Bust	32 ½	83	33 ½	84	34 ½	88	35 ½	90	36 ½	93	38	97	39 ½	100	41	104
Waist	25 ½	65	26 ½	68	27 ½	70	28 ½	72	29 ½	75	31	79	32 ½	83	34	86
Hips	35 ¾	91	36 ¾	92	37 ¾	96	38 ¾	98	39 ¾	101	41 ¼	105	42 ¾	109	44 ¼	112
Hollow to Hem	58	147	58	147	59	150	59	150	60	152	60	152	61	155	61	155
Height	63	160	65	160	65	165	65	165	67	170	67	170	69	175	69	175

Plus Size Dress Size

Discover our [Plus-Size Wedding Dress Collection](#)

Plus Size (US)	14W		16W		18W		20W		22W		24W		26W	
Europe Size	44		46		48		50		52		54		56	
UK Size	18		20		22		24		26		28		30	
	inch	cm	inch	cm	inch	cm	inch	cm	inch	cm	inch	cm	inch	cm
Bust	41	104	43	109	45	114	47	119	49	124	51	130	53	135
Waist	34	86	36 ¼	92	38 ½	98	40 ¾	104	43	109	45 ¼	115	47 ½	121
Hips	43 ½	110	45 ½	116	47 ½	121	49 ½	126	51 ½	131	53 ½	136	55 ½	141
Hollow to Hem	61	155	61	155	61	155	61	155	61	155	61	155	61	155
Height	69	175	69	175	69	175	69	175	69	175	69	175	69	175

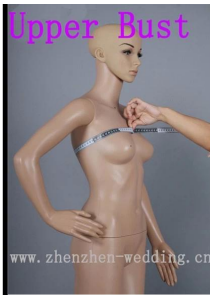




Bust

Measure around the fullest part of your bust.

www.zhenzhen-wedding.cn



Upper Bust

Measure around the upper of your breast as shown in the picture.

www.zhenzhen-wedding.cn



Under Bust

Measure around the under of your breast as shown in the picture.

www.zhenzhen-wedding.cn



Waist

Measure around the smallest part of your waist as shown in the picture.

www.zhenzhen-wedding.cn



Upper Hips

Measure around the hip-bones part as shown in the picture.

www.zhenzhen-wedding.cn



Hips

Measure around the fullest part of your hips as shown in the picture.

www.zhenzhen-wedding.cn



Nipple to Nipple

Measure the distance between your two nipples as shown in the picture.

www.zhenzhen-wedding.cn



Hollow to Floor

Please stand up straight. Measure the length from hollow to floor without shoes.

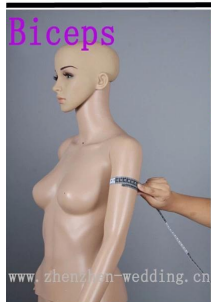
www.zhenzhen-wedding.cn



Armseye

Measure the size of the sleeve-hole as shown in the picture.

www.zhenzhen-wedding.cn



Biceps

Measure around the fullest part of your biceps.

www.zhenzhen-wedding.cn



Wrist

Measure around the wrist.

www.zhenzhen-wedding.cn



Sleeve Length

Measure the length from your sholder point to the wrist.

www.zhenzhen-wedding.cn



Shoulder to Nipple

Measure the length from the shoulder to the nipple.

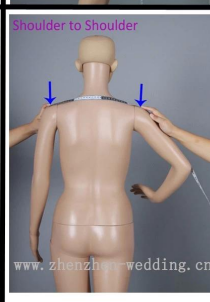
www.zhenzhen-wedding.cn



Shoulder to Waist

Measure the length from shoulder to waist (through the nipple).

www.zhenzhen-wedding.cn



Shoulder to Shoulder

Measure the distand between the shoulders.

www.zhenzhen-wedding.cn



Natural Height

Your height from head-top to the floor without shoes.

www.zhenzhen-wedding.cn



Neck Girth

Measure around the neck bottom.

www.zhenzhen-wedding.cn



Heel Height

Measure the height of your shoes' heel

www.zhenzhen-wedding.cn



Designing



CAD Engraving



Tailoring



Sewing



Ironing



Pleating



Appliques



Hand-sewing



Hand-beading



Checking



Taking photos



Packing



Shipping



Delivery

