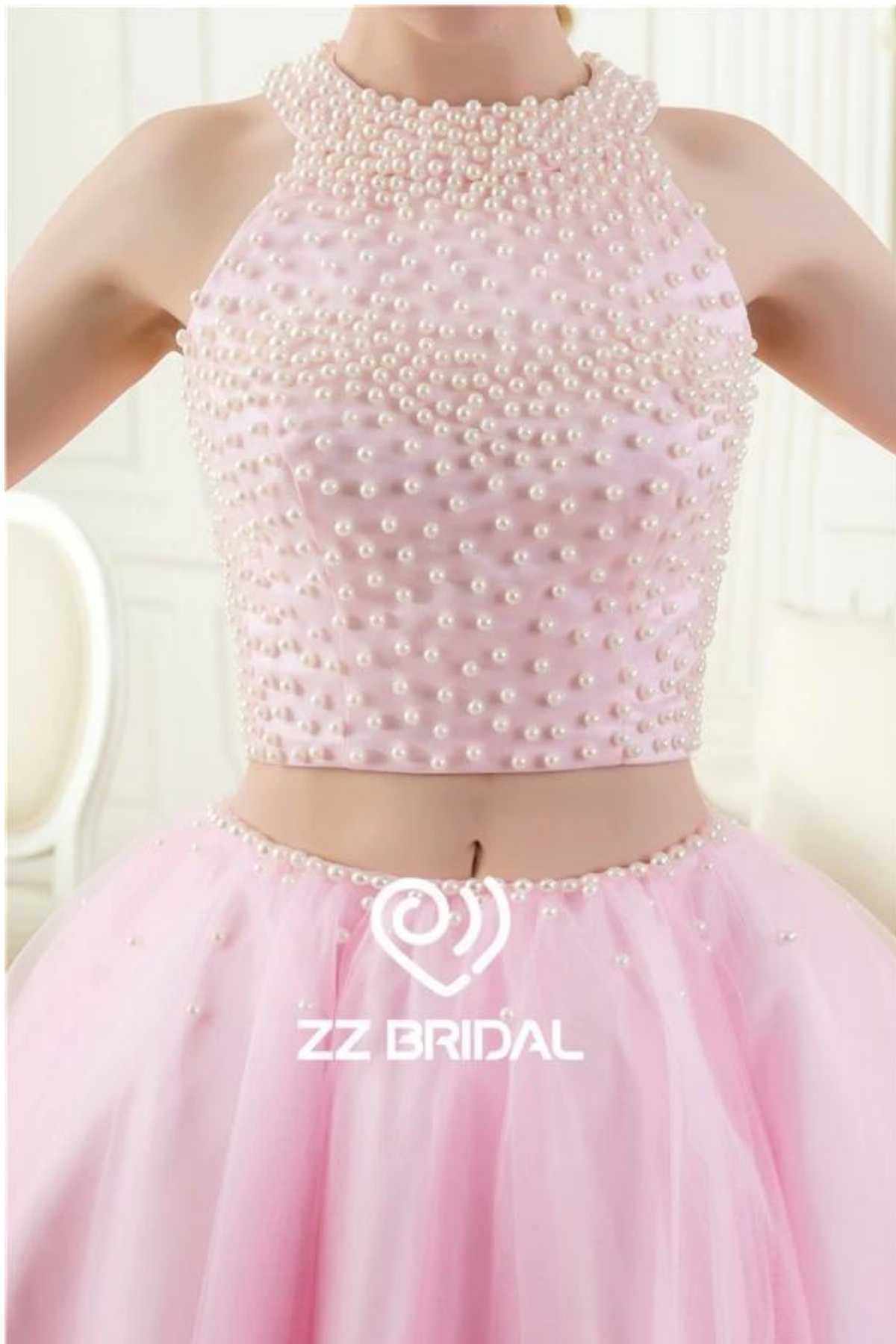


Robe de mariée Suzhou HMY Co., Ltd.







ZZ BRIDAL




ZZ BRIDAL

| | | |
|----|-----------------|---|
| 1) | Nom du produit | Sexy perles corsage plein licol retour sur deux pièces robe rose de soirée courte |
| 2) | Numéro de style | ZZ-E5007 |
| 3) | Tissu | Satin, Tulle |
| 4) | MOQ | 1 pièce |
| 5) | Service | OEM et ODM. |
| 6) | Couleur | Rose ou personnalisé |

| | | |
|-----|-------------------------|---|
| 7) | Taille | S'il vous plaît choisir de nos tableaux de tailles, ou vous pouvez suivre nos instructions de mesure. |
| 8) | Note | Les prix ne comprennent pas les frais de transport et tous les accessoires: gants, voiles de mariage ou de vestes comme indiqué dans l'image. |
| 9) | Conditions de livraison | Habituellement envoyé par Air Express tels que DHL, UPS, EMS, TNT, FEDEX, ARAMEX, TOLL et ainsi de suite. |
| 10) | Temps de production | Hors saison: 10-15 jours pour un ordre; Occupé-saison: 20-30 jours pour une seule commande. |
| 11) | Paieement Termes | Western Union, Money Gram, virement, d'engagement, Visa, Master Card. |
| 12) | Attention | Si une décoration sur les robes que vous voulez est en rupture de stock, nous vous informerons avant vous passez la commande. |
| 13) | Conditionnement | Chaque robe dans un sac de polyester. |

1: Taille Charts:

| Standard Dress Size Chart | | | | | | | | | | | | | | | | |
|---------------------------|------|-----|------|-----|------|-----|------|-----|------|-----|------|-----|------|-----|------|-----|
| US Size | 2 | | 4 | | 6 | | 8 | | 10 | | 12 | | 14 | | 16 | |
| Europe Size | 32 | | 34 | | 36 | | 38 | | 40 | | 42 | | 44 | | 46 | |
| UK Size | 6 | | 8 | | 10 | | 12 | | 14 | | 16 | | 18 | | 20 | |
| | inch | cm | inch | cm | inch | cm | inch | cm | inch | cm | inch | cm | inch | cm | inch | cm |
| Bust | 32½ | 83 | 33½ | 84 | 34½ | 88 | 35½ | 90 | 36½ | 93 | 38 | 97 | 39½ | 100 | 41 | 104 |
| Waist | 25½ | 65 | 26½ | 68 | 27½ | 70 | 28½ | 72 | 29½ | 75 | 31 | 79 | 32½ | 83 | 34 | 86 |
| Hips | 35½ | 91 | 36½ | 92 | 37½ | 96 | 38½ | 98 | 39½ | 101 | 41½ | 105 | 42½ | 109 | 44½ | 112 |
| Hollow to Hem | 58 | 147 | 58 | 147 | 59 | 150 | 59 | 150 | 60 | 152 | 60 | 152 | 61 | 155 | 61 | 155 |
| Natural Height | 63 | 160 | 65 | 160 | 65 | 165 | 65 | 165 | 67 | 170 | 69 | 175 | 69 | 175 | 69 | 175 |

| Plus Size Dress Size Chart | | | | | | | | | | | | | | |
|----------------------------|------|-----|------|-----|------|-----|------|-----|------|-----|------|-----|------|-----|
| US Size | 14W | | 16W | | 18W | | 20W | | 22W | | 24W | | 26W | |
| Europe Size | 44W | | 46W | | 48W | | 50W | | 52W | | 54W | | 56W | |
| UK Size | 18W | | 20W | | 22W | | 24W | | 26W | | 28W | | 30W | |
| | inch | cm | inch | cm | inch | cm | inch | cm | inch | cm | inch | cm | inch | cm |
| Bust | 41 | 104 | 43 | 109 | 45 | 114 | 47 | 119 | 49 | 124 | 51 | 130 | 53 | 135 |
| Waist | 34 | 86 | 36½ | 92 | 38½ | 98 | 40½ | 104 | 43 | 109 | 45½ | 115 | 47½ | 121 |
| Hips | 43½ | 110 | 45½ | 116 | 47½ | 121 | 49½ | 126 | 51½ | 131 | 53½ | 136 | 55½ | 141 |
| Hollow to Hem | 61 | 155 | 61 | 155 | 61 | 155 | 61 | 155 | 61 | 155 | 61 | 155 | 61 | 155 |
| Natural Height | 69 | 175 | 69 | 175 | 69 | 175 | 69 | 175 | 69 | 175 | 69 | 175 | 69 | 175 |

2: Mensurations Instructions:

| | | | | | |
|---|--|--|---|---|--|
|  <p>Bust</p> <p>www.zhenzhen-wedding.cn</p> | <p>Measure around the fullest part of your bust.</p> |  <p>Upper Bust</p> <p>www.zhenzhen-wedding.cn</p> | <p>Measure around the upper of your breast as shown in the picture.</p> |  <p>Under Bust</p> <p>www.zhenzhen-wedding.cn</p> | <p>Measure around the under of your breast as shown in the picture.</p> |
|  <p>Waist</p> <p>www.zhenzhen-wedding.cn</p> | <p>Measure around the smallest part of your waist as shown in the picture.</p> |  <p>Upper Hips</p> <p>www.zhenzhen-wedding.cn</p> | <p>Measure around the hip-bones part as shown in the picture.</p> |  <p>Hips</p> <p>www.zhenzhen-wedding.cn</p> | <p>Measure around the fullest part of your hips as shown in the picture.</p> |
|  <p>Nipple to Nipple</p> <p>www.zhenzhen-wedding.cn</p> | <p>Measure the distance between your two nipples as shown in the picture.</p> |  <p>Hollow to Floor</p> <p>www.zhenzhen-wedding.cn</p> | <p>Please stand up straight. Measure the length from hollow to floor without shoes.</p> |  <p>Armseye</p> <p>www.zhenzhen-wedding.cn</p> | <p>Measure the size of the sleeve-hole as shown in the picture.</p> |
|  <p>Biceps</p> <p>www.zhenzhen-wedding.cn</p> | <p>Measure around the fullest part of your biceps.</p> |  <p>Wrist</p> <p>www.zhenzhen-wedding.cn</p> | <p>Measure around the wrist.</p> |  <p>Sleeve Length</p> <p>www.zhenzhen-wedding.cn</p> | <p>Measure the length from your sholder point to the wrist.</p> |
|  <p>Shoulder to Nipple</p> <p>www.zhenzhen-wedding.cn</p> | <p>Measure the length from the shoulder to the nipple.</p> |  <p>Shoulder to Waist</p> <p>www.zhenzhen-wedding.cn</p> | <p>Measure the length from shoulder to waist (through the nipple).</p> |  <p>Shoulder to Shoulder</p> <p>www.zhenzhen-wedding.cn</p> | <p>Measure the distand between the shoulders.</p> |
|  <p>Natural Height</p> <p>www.zhenzhen-wedding.cn</p> | <p>Your height from head-top to the floor without shoes.</p> |  <p>Neck Girth</p> <p>www.zhenzhen-wedding.cn</p> | <p>Measure around the neck bottom.</p> |  <p>Heel Height</p> <p>www.zhenzhen-wedding.cn</p> | <p>Measure the height of your shoes' heel</p> |

3: Tableau robe de soirée couleur:

新版 货号:8003(弹力色丁)



货号:8003(弹力色丁)



货号:8003(弹力色丁)

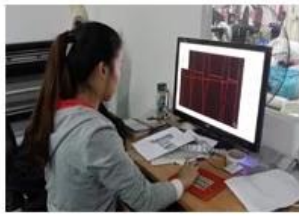


4: Traitement:

1:Designing



2:CAD Engraving



3:Tailoring



4:Sewing



5:Ironing



6:Pleating



7:Appliques



8:Hand-sewing



9:Hand-beading



10:Checking



11:Taking photos



12:Packing



13:Shipping



14:Delivery

