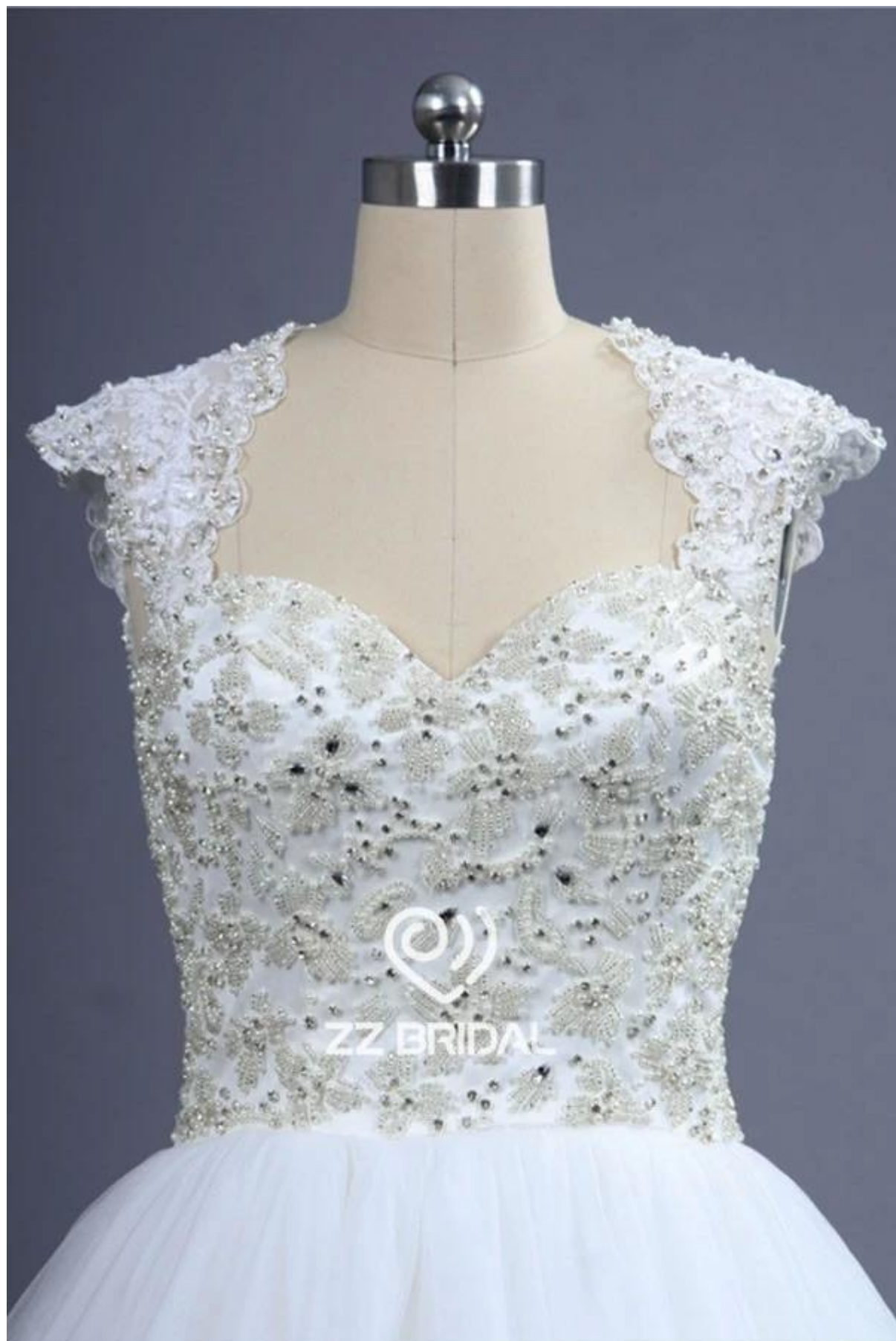


**Suzhou HMY Wedding Dress Co, Ltd.**







  
ZZ BRIDAL



|    |             |  |
|----|-------------|--|
| 1) | Productnaam | High-end cap mouw gerolde kant -tot prinses trouwjurk gemaakt in China |
| 2) | Stijlnummer | ZZ-W3002   |
| 3) | Weefsel     | Satijn, tule   |
| 4) | MOQ         | 1 stuk   |
| 5) | Service     | OEM en ODM.  |

|     |                      |   |
|-----|----------------------|---|
| 6)  | Kleur                | Wit, licht ivoor, ivoor en champagne of aangepaste  |
| 7)  | Grootte              | Kies uit onze maattabellen, of u kunt volgen onze instructies meting.   |
| 8)  | Aantekening          | De prijzen hebben geen verzendkosten en eventuele accessoires: zoals handschoenen, bruiloft sluiers of jassen, zoals aangegeven in de afbeelding. |
| 9)  | Leveringsvoorwaarden | Meestal verzonden door Air Express, zoals DHL, UPS, EMS, TNT, FedEx, Aramex, TOL enzovoort.   |
| 10) | Toonaangevende Tijd  | Off-seizoen: 10-15 dagen voor een bestelling; Busy-seizoen: 20-30 dagen voor een bestelling.  |
| 11) | Betaling Voorwaarden | Western Union, Money Gram, bankoverschrijving, Escrow, Visa, Master Card.   |
| 12) | Attentie             | Als sommige decoratie op de jurken je wilt niet op voorraad is, zullen wij u op de hoogte voordat u de bestelling plaatst.                        |
| 13) | Verpakkingen         | Elke jurk in een polyester zak.   |

1: Size Charts:

| Standard Dress Size Chart |      |     |      |     |      |     |      |     |      |     |      |     |      |     |      |     |
|---------------------------|------|-----|------|-----|------|-----|------|-----|------|-----|------|-----|------|-----|------|-----|
| US Size                   | 2    |     | 4    |     | 6    |     | 8    |     | 10   |     | 12   |     | 14   |     | 16   |     |
| Europe Size               | 32   |     | 34   |     | 36   |     | 38   |     | 40   |     | 42   |     | 44   |     | 46   |     |
| UK Size                   | 6    |     | 8    |     | 10   |     | 12   |     | 14   |     | 16   |     | 18   |     | 20   |     |
|                           | inch | cm  | inch | cm  | inch | cm  | inch | cm  | inch | cm  | inch | cm  | inch | cm  | inch | cm  |
| Bust                      | 32½  | 83  | 33½  | 84  | 34½  | 88  | 35½  | 90  | 36½  | 93  | 38   | 97  | 39½  | 100 | 41   | 104 |
| Waist                     | 25½  | 65  | 26½  | 68  | 27½  | 70  | 28½  | 72  | 29½  | 75  | 31   | 79  | 32½  | 83  | 34   | 86  |
| Hips                      | 35½  | 91  | 36½  | 92  | 37½  | 96  | 38½  | 98  | 39½  | 101 | 41½  | 105 | 42½  | 109 | 44½  | 112 |
| Hollow to Hem             | 58   | 147 | 58   | 147 | 59   | 150 | 59   | 150 | 60   | 152 | 60   | 152 | 61   | 155 | 61   | 155 |
| Natural Height            | 63   | 160 | 65   | 160 | 65   | 165 | 65   | 165 | 67   | 170 | 69   | 175 | 69   | 175 | 69   | 175 |

| Plus Size Dress Size Chart |      |     |      |     |      |     |      |     |      |     |      |     |      |     |  |  |
|----------------------------|------|-----|------|-----|------|-----|------|-----|------|-----|------|-----|------|-----|--|--|
| US Size                    | 14W  |     | 16W  |     | 18W  |     | 20W  |     | 22W  |     | 24W  |     | 26W  |     |  |  |
| Europe Size                | 44W  |     | 46W  |     | 48W  |     | 50W  |     | 52W  |     | 54W  |     | 56W  |     |  |  |
| UK Size                    | 18W  |     | 20W  |     | 22W  |     | 24W  |     | 26W  |     | 28W  |     | 30W  |     |  |  |
|                            | inch | cm  | inch | cm  | inch | cm  | inch | cm  | inch | cm  | inch | cm  | inch | cm  |  |  |
| Bust                       | 41   | 104 | 43   | 109 | 45   | 114 | 47   | 119 | 49   | 124 | 51   | 130 | 53   | 135 |  |  |
| Waist                      | 34   | 86  | 36½  | 92  | 38½  | 98  | 40½  | 104 | 43   | 109 | 45½  | 115 | 47½  | 121 |  |  |
| Hips                       | 43½  | 110 | 45½  | 116 | 47½  | 121 | 49½  | 126 | 51½  | 131 | 53½  | 136 | 55½  | 141 |  |  |
| Hollow to Hem              | 61   | 155 | 61   | 155 | 61   | 155 | 61   | 155 | 61   | 155 | 61   | 155 | 61   | 155 |  |  |
| Natural Height             | 69   | 175 | 69   | 175 | 69   | 175 | 69   | 175 | 69   | 175 | 69   | 175 | 69   | 175 |  |  |

2: Metingen Instructies:

|   |  |  |   |   |  |
|---|--|--|---|---|--|
|  <p><b>Bust</b></p> <p>www.zhenzhen-wedding.cn</p>                 | <p>Measure around the fullest part of your bust.</p>                           |  <p><b>Upper Bust</b></p> <p>www.zhenzhen-wedding.cn</p>          | <p>Measure around the upper of your breast as shown in the picture.</p>                 |  <p><b>Under Bust</b></p> <p>www.zhenzhen-wedding.cn</p>             | <p>Measure around the under of your breast as shown in the picture.</p>      |
|  <p><b>Waist</b></p> <p>www.zhenzhen-wedding.cn</p>                | <p>Measure around the smallest part of your waist as shown in the picture.</p> |  <p><b>Upper Hips</b></p> <p>www.zhenzhen-wedding.cn</p>          | <p>Measure around the hip-bones part as shown in the picture.</p>                       |  <p><b>Hips</b></p> <p>www.zhenzhen-wedding.cn</p>                   | <p>Measure around the fullest part of your hips as shown in the picture.</p> |
|  <p><b>Nipple to Nipple</b></p> <p>www.zhenzhen-wedding.cn</p>    | <p>Measure the distance between your two nipples as shown in the picture.</p>  |  <p><b>Hollow to Floor</b></p> <p>www.zhenzhen-wedding.cn</p>    | <p>Please stand up straight. Measure the length from hollow to floor without shoes.</p> |  <p><b>Armseye</b></p> <p>www.zhenzhen-wedding.cn</p>               | <p>Measure the size of the sleeve-hole as shown in the picture.</p>          |
|  <p><b>Biceps</b></p> <p>www.zhenzhen-wedding.cn</p>             | <p>Measure around the fullest part of your biceps.</p>                         |  <p><b>Wrist</b></p> <p>www.zhenzhen-wedding.cn</p>             | <p>Measure around the wrist.</p>  |  <p><b>Sleeve Length</b></p> <p>www.zhenzhen-wedding.cn</p>        | <p>Measure the length from your sholder point to the wrist.</p>              |
|  <p><b>Shoulder to Nipple</b></p> <p>www.zhenzhen-wedding.cn</p> | <p>Measure the length from the shoulder to the nipple.</p>                     |  <p><b>Shoulder to Waist</b></p> <p>www.zhenzhen-wedding.cn</p> | <p>Measure the length from shoulder to waist (through the nipple).</p>                  |  <p><b>Shoulder to Shoulder</b></p> <p>www.zhenzhen-wedding.cn</p> | <p>Measure the distand between the shoulders.</p>                            |
|  <p><b>Natural Height</b></p> <p>www.zhenzhen-wedding.cn</p>     | <p>Your height from head-top to the floor without shoes.</p>                   |  <p><b>Neck Girth</b></p> <p>www.zhenzhen-wedding.cn</p>        | <p>Measure around the neck bottom.</p>  |  <p><b>Heel Height</b></p> <p>www.zhenzhen-wedding.cn</p>          | <p>Measure the height of your shoes' heel</p>                                |

3: Wedding Dress Kleurenkaart:



4: Verwerking:

1:Designing



2:CAD Engraving



3:Tailoring



4:Sewing



5:Ironing



6:Pleating



7:Appliques



8:Hand-sewing



9:Hand-beading



10:Checking



11:Taking photos



12:Packing



13:Shipping



14:Delivery

